

Oakley Sound Systems

5U Oakley Modular Series

One of Three

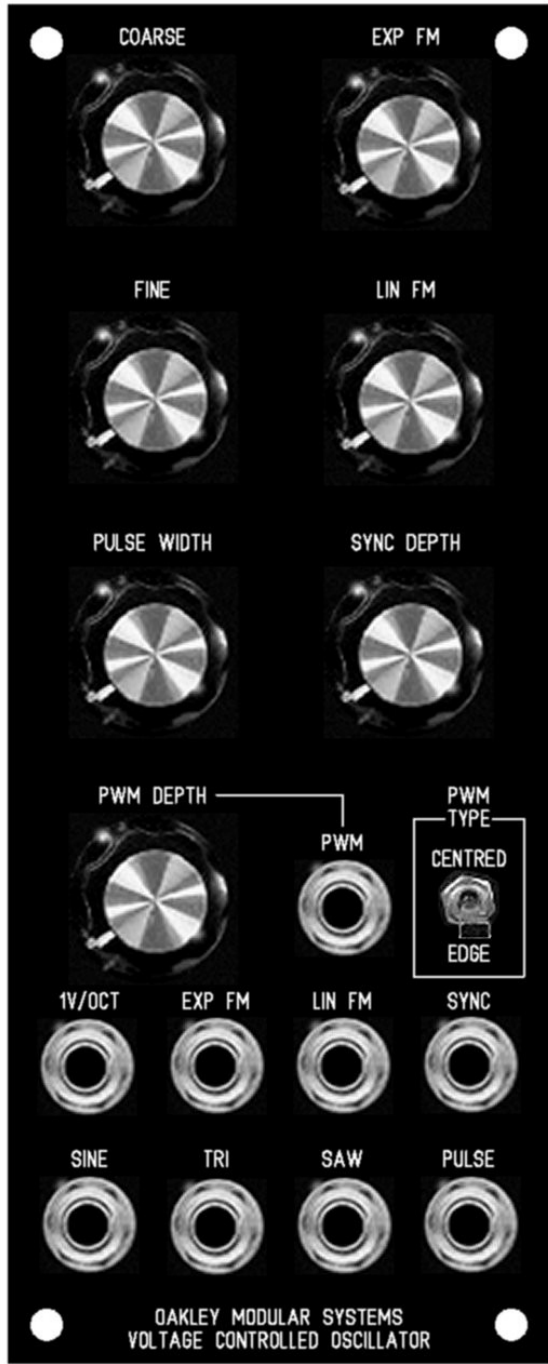
Voltage Controlled Oscillator

PCB Issue 5

Builder's Guide

V5.0.7

Tony Allgood B.Eng PGCE
Oakley Sound Systems
CARLISLE
United Kingdom



Introduction

This is the Project Builder's Guide for the issue 5 VCO 5U module from Oakley Sound.

This document contains a basic introduction to the board, a description of the schematic, a full parts list for the components needed to populate the boards, a list of the various interconnections and some basic testing methods.

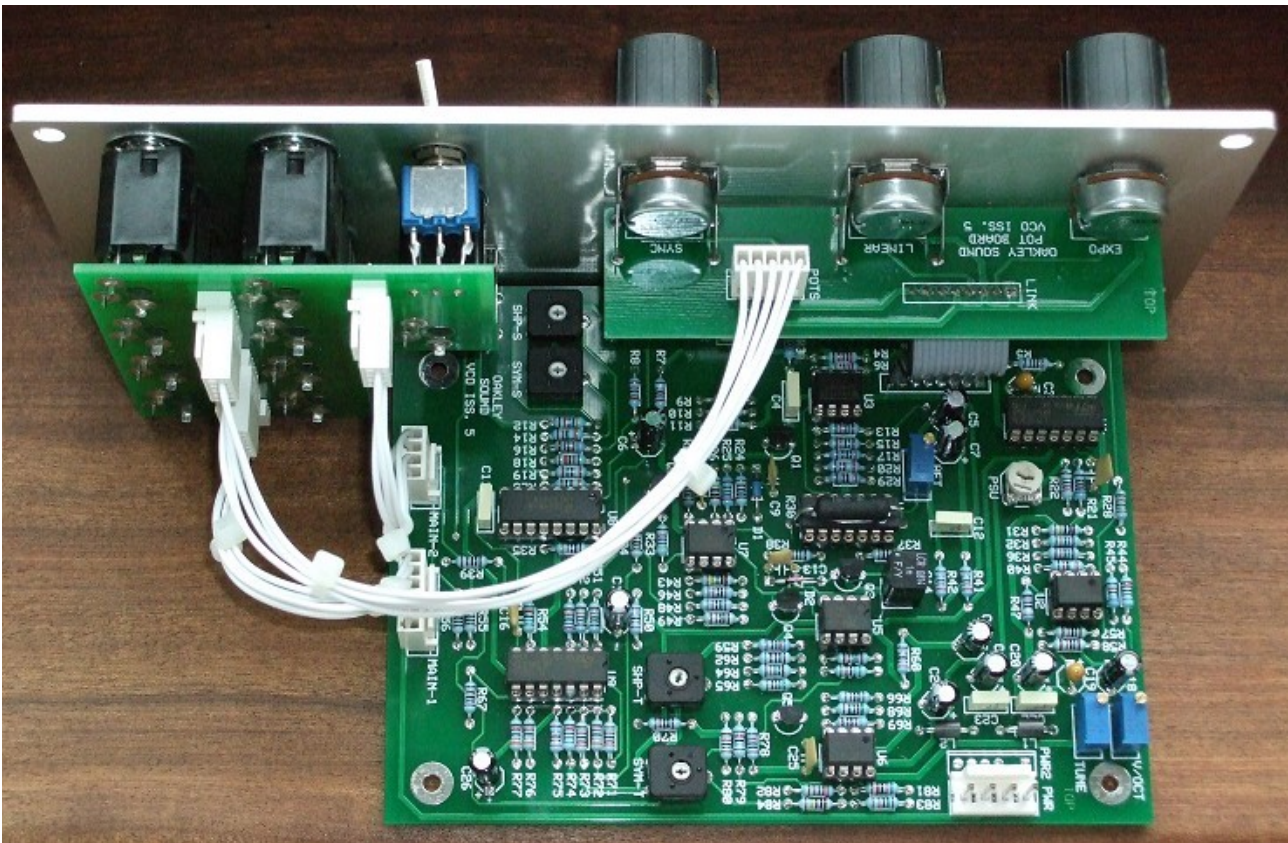
For the User Manual, which contains an overview of the operation of the unit, the history of the various board issues, and all the calibration procedures, please visit the main project webpage at:

<http://www.oakleysound.com/vco.htm>

For general information regarding where to get parts and suggested part numbers please see our useful Parts Guide at the project webpage or <http://www.oakleysound.com/parts.pdf>.

For general information on how to build our modules, including circuit board population, mounting front panel components and making up board interconnects please see our generic Construction Guide at the project webpage or <http://www.oakleysound.com/construct.pdf>.

The issue 5 printed circuit board set



The issue 5 PCB set fitted to a natural finish Schaeffer panel. The board interconnects are Molex KK 0.1" types.

The main PCB is 108 mm (depth) x 144 mm (height) in size. All three boards use double sided copper traces and have through plated holes. The solder pads are large and are easy to solder and de-solder if necessary. They have a high quality solder mask on both sides for easier soldering, and have clear legending on the component side for easier building.

If you are building the standard design there are no components mounted off the boards. All components including sockets and pots are soldered directly to the boards.

Previously, many Oakley modules have had the sockets, switches and extra pots wired to the board by individual wires. This module allows all the socket wiring to be done via the socket PCB and two MTA solderless or Molex connections. If you are building this module in the standard Oakley format this new system will reduce assembly time and possible wiring errors.

Some people will wish to use this Oakley design in a non standard format, such as fitting it to another manufacturer's rack or one of their own invention. This is perfectly easy to do. Simply do not use the socket board and wire the main board to the sockets as per usual.

I have provided space for the three main control pots on the PCB. If you use the specified 16mm Alpha pots and matching brackets, the PCB can be held firmly to the panel without any additional mounting procedures. The pot spacing is 1.625" and is the same as the vertical spacing on the MOTM modular synthesiser and most of our other modules.

Power supply requirements

The design requires plus and minus 15V supplies. The power supply should be adequately regulated. The current consumption is about 30mA for each rail. Power is routed onto the PCB by a four way 0.156" MTA156 type connector or the special five way Synthesizers.com MTA100 header. You could, of course, wire up the board by soldering on wires directly. The four pins on the four way header are +15V, ground, earth/panel ground, -15V. The earth/panel connection allows you to connect the metal front panel to the power supply's ground without it sharing the modules' ground line. More about this later.

Circuit Description

The VCO circuit can be thought of as several little subsections connected together. Let us look at these little sections separately.

The first thing to look at is the power supply. This is shown on the bottom of the second sheet of the schematics. The VCO could have been powered by +/-15V, but I wanted the VCO to sound like a minimoog. To do this, I have used the same voltage levels within the VCO core as the original. Thus we need to generate stable +10V and +5V supplies. I still used the +/-15V supply for most of the op-amps as this would not have any affect on the waveforms.

Power enters the board on a 4-way MTA156 connector (PWR) or modified six way MTA100 header (PWR2). It is filtered initially by two small ferrite inductors, and decoupled by C20 to C23. These prevent stray high frequency pulses from entering or leaving the unit by the power supply lines. A LM723 voltage regulator IC is used to provide the 10V. This is an old IC design, some 30 years, but it is a superb device and has very low noise. The only problem is that you have to set the output manually. PSU is a trimmer to set the voltage to be exactly 10.00V. The PCB has been laid out for a 6mm cermet trimmer for long term stability.

Additional power supply decoupling is provided to each set of op-amps and ICs. This prevents any reset pulses from travelling down the power supplies and soft synching the other VCOs in your system.

To find the next part of the power supply we need to look at the first sheet of the schematics. Two sections on this page generate the stable +5V and -10V required by the VCO.

U2 (pins 5, 6, 7) provides the +5V supply, by simply buffering half the +10V rail. An LT1013 is specified to provide a very stable output.

U3 (pins 1, 2, 3) is a simple inverter circuit that produces a very stable -10.00V supply for the tune pots and trimmers. Together with the stable +10.00V supply, this prevents any perturbations in the +/-15V supply rails from affecting the tuning of the VCO. In reality, the tolerance of the 22K resistors may mean that the output is not exactly -10.00V. This is perfectly OK, since we are not interested in the actual value so much, but the stability. Those 22K resistors are metal film and their value will not change appreciably over the years or at differing temperatures.

The VCO's pitch is determined by a variety of sources. Two 1V/octave CV inputs, and two pots on the front panel, and a trimmer to set initial frequency. U2 (pins 1, 2, 3) is built as a voltage summer.

It takes the voltages from the five sources and adds them together. The gain of the summer is set by the input resistors and R44 and the V/OCT trimmer. For the two 1V/octave inputs the gain is roughly -0.7. The V/OCT trimmer is adjusted to give a rise of one octave in output frequency when the keyboard input voltage goes up by 1V. The output of the CV summer is then fed to the exponential convertor via R29 and R30.

The exponential convertor is based around on half of U3 (5, 6, 7) and the quad NPN array of U4. Its output is a current that is proportional to the exponent of the voltage applied at the base of the left hand transistor of U4. The circuit gives the VCO a sensitivity of roughly -18mV/octave, so R29 and R30 reduce the output of the CV summer to this level. However, it is worth noting that R30 is a temperature sensitive resistor. The resistance of R30 will go up with temperature at a rate of 0.33% for every degree Celsius. This should counteract the temperature effects produced by the semiconductor junctions in U4. To get the best temperature stability R30 is mounted right on top of U4. This way the temperature of the two devices should be the same.

It is possible to get an exponential response from a single transistor, but that has problems as V_{be} , the junction voltage, changes with ambient temperature. The 'temp co' resistor cannot compensate for this change in the transistor's operating current. So the now classic circuit with two perfectly matched transistors and an op-amp, U4 and U3, is used. Changes in the V_{be} for one half of the transistor pair are mirrored in the other. The op-amp then matches the current in the first transistor with the same current in the other one. So the collector current in the first transistor will effectively control the collector current in the second. And it is the current drawn by the second transistor that controls the frequency of the VCO.

The op-amp method also has another bonus, it allows an additional current to be injected into the inverting pin of U3. This current will directly control the output current of the exponential convertor. R15 allows an input CV to control this current. We now have a linear frequency modulation input, whose sensitivity is set by R15. Connecting this input to the wiper of a pot, allows you to control the sensitivity of this input directly from the VCO's front panel.

Note that this input is not a true linear input control. This VCO, and most other modular VCOs, do not have that capability. What we have here is a constant modulation index input. This is linear modulation, but not linear control. The precise description of this statement is probably beyond the scope of this document, but in a nut shell it means this: The linear input will not act with a strict volt per hertz relationship. That is, for every 1V, the output frequency will not rise by a fixed amount. But it will act so that audio rate FM will create a constant depth of modulation on any given frequency controlled by the usual 1V/octave inputs. This means that the for audio rate FM effects (clangs, bells and the like) you can get very good results with the linear FM input.

R3 has been chosen to set the operating frequency of the VCO at approximately 1kHz when the voltage at the base of the left hand transistor is zero. The exponential convertor works at its most accurate when the voltage across the two bases is zero. And since the human ear is particularly sensitive to frequency changes at around 1kHz it is good to make the most accurate part of the VCO at this frequency.

The output of the exponential convertor is a current. It is this current that controls the core of the oscillator. Contrary to many people's ideas, the core of a VCO is typically a linear CCO. That is a current controlled oscillator. A doubling of current to (or from in this case) the CCO will produce a doubling of output frequency.

The core of this VCO is a traditional sawtooth oscillator. C14 is the timing capacitor that is charged by the output of the exponential convertor. Since one end of C14 is tied to +5V, the voltage at the other side of C14 moves towards zero volts as current is 'sucked' out of it. The higher the current the faster the voltage drops. This voltage is 'sniffed' by one half of dual op-amp U5, which produces a replica of this voltage at its output. Q4 aids the output of U5, as well as providing a suitable offset for the triangle generator circuit (see later).

U7 (pins 1, 2, 3) is a comparator, and it is 'watching' the output of U5. When the voltage across C14 reaches -5V, the output of U5 (pin1), normally at -15V, suddenly flies upward towards 10V. This sudden level change passes through C13, and turns on JFET, Q3. This rapidly shorts out C14, and the voltage across the capacitor drops to zero and both of its pins are at +5V once again. This means that the voltage at the input of U8 is also at +5V, and the charging process begins again. C10 controls the time that the FET is on.

The sync input enables an external voltage to trip the comparator early. This will cause premature shorting of the capacitor, locking the fundamental of the VCO to an incoming external sawtooth signal. However, the fall time of the VCO's saw waveform will still be set by the input CV to the VCO. Thus, you will not get traditional sawtooth waveforms, but half completed sawteeth. The sonic affects of these are marvellous, especially if you sweep your VCO with an envelope generator whilst locked to another VCO at fixed frequency. The controlled VCO is often called the 'slave', while the fixed VCO is called the 'master'.

The incoming sync signal is first buffered by Q1, a simple emitter follower. This is shown on the second page of the schematics. R11, C1 and C2 provide decoupling to prevent power supply noise from accidental triggering of the VCO. The buffered signal is then passed to a simple differentiator based around C9 (back on page one again). This part in conjunction with D1 and R24 only allow only fast moving rising edges of the input waveform to reset the VCO core. In theory this should allow any pulse wave to be used as sync waveforms, but the best sync sounds can be obtained when a falling sawtooth master signal is used.

This last statement is very important if you want to use sync effectively. Use sawtooth outputs from Oakley VCOs to sync other Oakley VCOs. MOTM VCOs produce rising ramps not falling sawtooth waveforms. So you if you want to use a MOTM VCO as the master to sync the slave Oakley VCO, then you must invert the MOTM's output first. You could use an Oakley Multimix to do the inversion.

The suggested layout of the Oakley VCO includes a depth control for the sync input. This will allow you to create partial syncing effects. This effect is very difficult to describe in words and has to be heard to be believed. But very very complex timbres can be produced this way.

At high frequencies the VCO can go a little flat due to the finite time it takes to reset C14, and errors in the exponential convertor. By lowering the maximum peak voltage of the sawtooth waveform, the capacitor has less charge to loose before the output of U5 reaches zero. Thus the frequency is higher than it would have been. Using a resistance in series with C14, we have a voltage drop developed across the resistor that increases with frequency, due to the increased current through the exponential convertor. This method was first postulated by Sergio Franco, and is usually called 'Franco' compensation because of this. This works very well, but it does mean that the amplitude of the sawtooth waveform decreases slightly with increasing frequency. In the first two VCO issues I made this resistor variable. I was using the Franco resistance to compensate for both reset time and errors in the exponential convertor. In the issue 5 VCO, this resistance is fixed

by R37, and is compensating for reset time only.

The exponential convertor causes errors due to 'bulk emitter resistance' or R_{be} in the NPN pair, the top half of the THAT300. Now the THAT300 is a very good matched pair with low values of R_{be} , but it still has an effect at very high frequencies of the VCO. R_{be} is not a real resistor, but it acts as if a resistor was connected in series with the emitter of the transistor.

In the early issue VCO boards, this loss of high frequency performance was cancelled out by the effect of the Franco resistor. But really, this is a bit of a cludge since the Franco is designed to compensate for a fixed timing error (the FET reset time), whilst R_{be} causes an error related to frequency. Over the limited range of an audio VCO, this is usually perfectly fine and Franco is used in many commercial synth VCOs as the only high frequency compensation technique. For issue three I decided to go one better. The newer issue VCOs use a fixed Franco resistor for the reset time, and also use the Rossum technique to compensate for the exponential generators error.

Dave Rossum, founder of E-Mu systems in the 1970s, was an important player in the development of the SSM chips. The SSM2030 VCO chip, which was not as good in comparison to the later Curtis CEM3340, was ground breaking when it came out. Dave's method of HF compensation for the SSM2030 involved gently pulling the base of the first transistor of the NPN pair lower when the collector current through the second NPN gets bigger.

In the issue 3 VCO I slavishly copied Dave's idea as presented in Electronotes and indeed implemented in the Prophet V many years ago. However, due to work done by René Schmitz this simple method can be improved upon with the same number of components. As in the original Rossum idea a fixed emitter resistor, R17, can be used to effectively measure the emitter current, since the voltage on its bottom end will fall as collector current rises. Previously we took this voltage, passed it through a diode to compensate for the base-emitter voltage drop (V_{be}) of the matched pair and then fed a small proportion of the resultant voltage back to the base of the left hand transistor. This works well enough.

However, René's idea improves on this on two counts. Firstly, the diode in the pure Rossum method doesn't exactly compensate for the V_{be} because the current flowing in the diode and the base-emitter junction are very much different. In the new circuit, both semiconductors see a similar current as they are fed from identical resistive sources; R17 and the HFT trimmer are both the same value. Therefore, the voltage drop across the 'diode' and V_{be} should track each other reasonably well, even over a change in ambient temperature. The 'diode' in the issue 5 VCO is actually the base-emitter junction in a spare NPN transistor from the THAT300 array. One of the other benefits of René's method is that we feed the base of the left hand transistor with more or less the same resistance which was not true of the original Rossum technique. So now the extra resistance due to the HFT circuitry the left hand transistor base 'sees' is pretty much fixed at the value of R20 only. Thus altering the HFT trimmer should not result in a change in the overall operating frequency of the VCO as it did in the old method.

Going back to the VCO core: The sawtooth output from U5/Q2 is amplified by the other half of U5 (pins 5, 6, 7), before being sent to the output pad. The final output is roughly +5V to -5V, ie. 10V p-p.

The triangle shaper is essentially a full wave rectifier, whose operating point is about 2.5V. If the operating point is not exactly half the peak value of the sawtooth output of U5, then the triangle wave will have discontinuities in it. This leads to a slightly brighter or harsher sound than the

perfect 'textbook' triangle waveform. SHP-T is a trimmer that allows precise enough adjustment in the operating point to eliminate these glitches.

The created rectified wave is filtered before amplifying and level shifting by U6. The SYM-T trimmer sets the DC offset of the wave output to match that of the sawtooth output. The final output is again 10V p-p.

The sine wave shaper circuit, shown on page two of the schematics, acts upon the triangle wave output. The rounded peaks of the sine wave are created by deliberately overdriving the inputs of one half of U8, a dual operational transconductance amplifier (OTA). These devices are normally used as VCAs, but in this VCO it is merely acting as a soft clipping unit. The non linearities of the OTA's input stage being utilised to squash the top and bottom peaks of the triangle wave input. SHP-S adjusts the amount of overdrive. Since U8 gives a current output, it must be turned into a voltage and this is done by U9 (pins 5, 6, 7).

R18 provides a special negative feedback path within the shaper circuit. This increases the non-linearity of the whole stage at the critical peaks of the output waveform.

SYM-S provides compensation for the OTA's own offset voltage. This offset voltage means that the OTA will soft clip asymmetrically. By adding a small voltage of the opposite polarity to one of the input pins, we can cancel the effects of the offset.

The sine wave created by this process does not give us a perfect textbook example of a sine wave. However, the wave is very low in harmonics and for musical uses it is adequate.

The final output, and the final circuit block is the pulse conditioner. This is also found on page two of the schematics. The first section of this is the CV summer and is based around U9 (pins 1, 2, 3). This circuit simply sums together the PWM (pulse width modulation) CV input and the voltage from the wiper of the Width pot. The output of the CV summer will go from around -5V to +5V when being controlled by the Width pot alone.

The pulse wave generator itself is based around the second half of the comparator, U7 (pins 5, 6 & 7). This compares either the triangle wave or sawtooth wave output with a voltage set by the output of the CV summer. If the waveform is higher than the voltage from the CV summer, the comparator's output goes low. If it is lower, the output goes high. Thus, the output is either low or high, and spends very little time in between. This creates a rectangular waveform, where the proportion of time spent high or low is controlled by the WIDTH pot and/or the external CV. If the width pot is set to its middle position, and no input CV is applied, the output waveform should be a square wave. The output of the comparator swings from -15V to ground (or zero volts).

The output of the comparator is out of phase with the audio input. Q2 inverts this signal, so that the generated pulse wave will go high when the saw or triangle wave is high. It would be possible to generate the correct phase by simply wiring the comparator's inputs pins differently. Thus you wouldn't have to invert the output since it would already be the right way around. Earlier issues of the VCO, in fact, did this. However, this caused a less than perfect output waveform. The positive feedback provided by R40, which is needed for good comparator action, would cause the sawtooth or triangle wave to be superposed to the output waveform. This was considered not to be a problem, but with the new issue I decided to do things differently. And perhaps more correctly.

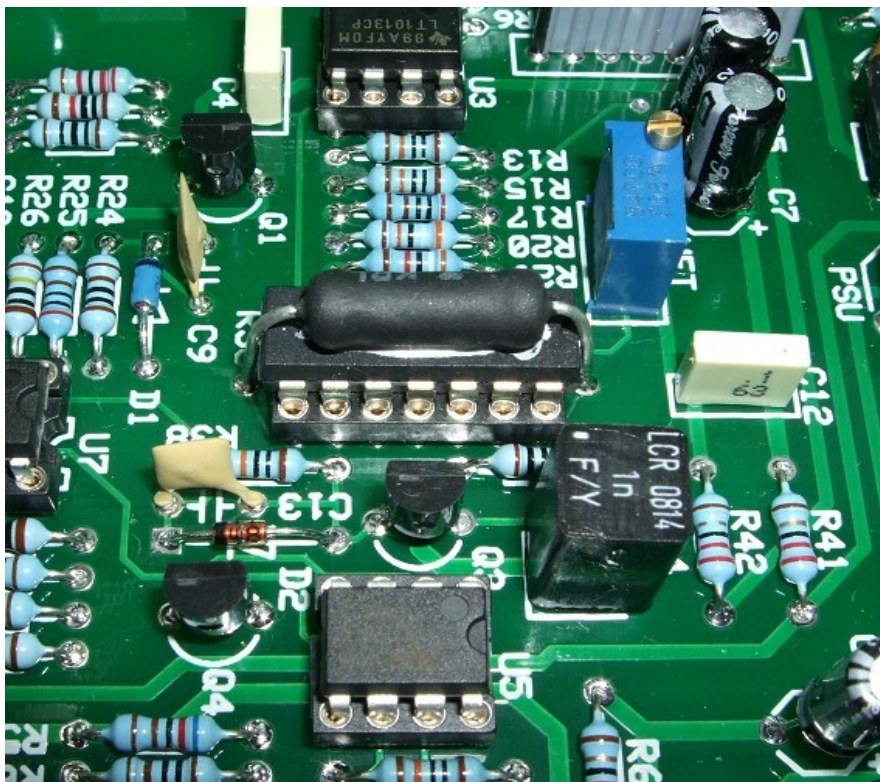
What follows after the comparator is, I think, new to modular VCO design. The inverted output of

the comparator is now summed with two voltages in U9 (pins 12, 13 & 14). One comes from the +15V supply via R74. The other is the output of the CV summer. The former allows the -15V/0V output swing of the comparator to be normalised between +5V and -5V. The other allows the output to be offset against zero volts as the pulse width is varied. When the CV summer has zero volts at its output, the generated pulse waveform is a square wave. No additional offset is added and the waveform from U9's output moves between +5V and -5V. As the pulse width changes, then the output of the CV summer moves away from zero. This is added to the waveform and the pulse output waveform moves above or below zero volts.

Analysing this dynamically changing output reveals that the average output voltage is actually always zero. This is because the offset added compensates for the altering amounts of time the waveform spends in the high (or low) states.

The summing circuit also inverts the waveform, so once again, we create the wrong phase. A simple op-amp inverter circuit, U9 (pins 9, 10 & 11) turns the pulse wave the right way round again.

If you do not want this dynamically varying output signal, then all you need to do is omit R71. The source of the audio source for the comparator comes from either the triangle or sawtooth waveforms selectable with a switch on the front panel. This selection is another unique feature of the Oakley 'One of three' VCO. Both will sound the same with fixed pulse widths. But, they do sound different when the width CV is modulated quickly.



A close up of the exponential convertor of the issue 5 VCO. The THAT300 NPN array is mounted in a 14-pin DIL socket and the 1K KRL temperature coefficient resistor straddles it. Note the small amount of thermal paste between the resistor and the array.

Components

For general information regarding where to get parts and suggested part numbers please see our useful Parts Guide at the project webpage or <http://www.oakleysound.com/parts.pdf>.

Some special considerations for this project

C14 is a close tolerance (2% or better) polystyrene capacitor or better. The PCB is laid out for EXFS/HR series made by LCR. Farnell and others sell these. They are good components at a good price.

The matched pair, THAT300P, can be difficult to trace, although Farnell and ourselves do carry stock.

U2 and U3 should be low offset bi-polar dual op-amps. The LT1013C is to be recommended for both its performance and cost. I used to recommend the OPA2277 but we now know of one case where a particular batch of OPA2277 devices caused oscillation to the +5V reference voltage

The LM1458 is a real oldie, and some places don't stock it any more. In the UK, Farnell and RS sell the little chap for peanuts.

The LM13700N may be substituted with either the older 13600 (still made by JRC) and the well and truly defunct Phillips' NE5517.

The positive temperature coefficient (PTC) resistor is worthy of a mention. Meggitt make a +3000ppm/K type that is a very good part. However, the actual theoretical value of compensation should be closer to around +3500ppm/K when used in the circuit that I have chosen. The Meggitt part thus falls slightly short of this, and may cause the VCO to lose 'V/oct' tracking over the full keyboard range unless the ambient temperature is pretty stable.

It is therefore preferable to get something closer to the ideal value. The ones I recommend are 1W wirewound resistors with a nominal TC of +3500ppm/K. You can buy these from us, KRL-Bantry in the US, or from Senso's Vintage Planet (www.senso.dds.nl/index.html). These are sold as equivalents to the old Tel Labs Q81 series. Once fitted to the VCOs, they give better tuning stability and allow the modular to 'warm up' quicker. They are also physically larger than the Meggitt type which means they are more stable in air drafts too.

The PTC resistor is fitted to the board so that it lies across the top of the THAT300 NPN array. A bit of thermal compound (eg. Thermpath) could be used to keep the two devices in contact. You'll need to carefully bend the legs of the TC to make sure it lies flat on the surface of the THAT300 and still fits through its solder pads.

The JFET is the J112, this is very common and is the same FET die as the original MiniMoog. But take note, the Mini used the E112, and that has a different pin out.

VCO issue 5 Parts List

For general information regarding where to get parts and suggested part numbers please see our useful Parts Guide at the project webpage or <http://www.oakleysound.com/parts.pdf>.

The components are grouped into values, the order of the component names is of no particular consequence.

A quick note on European part descriptions. R is shorthand for ohm. K is shorthand for kilo-ohm. M is shorthand for ohm. So 22R is 22 ohm, 1K5 is 1,500 ohms or 1.5 kilohms. For capacitors: 1uF = one microfarad = 1000nF = one thousand nanofarad.

To prevent loss of the small '.' as the decimal point, a convention of inserting the unit in its place is used. eg. 4R7 is a 4.7 ohm, 4K7 is a 4700 ohm resistor, 6n8 is a 6.8 nF capacitor.

Resistors

All 5% carbon 1/4W or better. Components designated as 1% should be 0.25W 1% metal film or better.

22R	R50, 42, 41, 60, 7, 75
100R	R11
390R	R19, 23
470R 1%	R37
1K	R55, 62, 24, 56, 39, 67
1K +3500ppm/K Temp co.	R30
2K	R17, 25
2K2	R5
2K2 1%	R22
5K1	R68
5K6	R65
6K2	R59
6K2 1%	R21
8K2	R16, 69
10K	R80, 78, 27, 70, 66, 48, 46, 49, 35, 10, 34
10K 1%	R2, 57, 58
18K	R79
22K	R82, 73, 9, 71
22K 1%	R4, 6
33K	R72, 77, 76
39K	R47
39K 1%	R29
47K	R12, 33
56K	R63, 54
62K	R18, 81
68K	R74
68K 1%	R44
100K	R36, 38, 13, 15, 61, 52, 51
100K 1%	R1, 32
150K	R64

180K 1%	R28
220K	R8
270K	R53
390K	R14, 20
390K 1%	R40
680K 1%	R3, 45
750K	R83
1M	R26, 84, 43
1M 1%	R31

Capacitors

18pF low-K 5mm ceramic	C10
100pF low-K 5mm ceramic	C13, 16
220pF low-K 5mm ceramic	C9
470pF low-K 5mm ceramic	C8, 25
1nF 100V polyester	C4
1nF 1% polystyrene	C14
100nF 63V polyester	C11, 12, 2, 23, 22
2u2, 63V electrolytic	C20, 21
4u7, 35V electrolytic	C18
10uF, 25V electrolytic	C3
22uF, 25V electrolytic	C15, 5, 7, 17, 6, 19, 24, 26, 1

Discrete Semiconductors

1N4148 signal diode	D2
BAT42 Schottky diode	D1
BC550 NPN transistor	Q1, 2, 4, 5
J112 J-FET	Q3

Integrated Circuits

LM1458 dual bi-polar op-amp	U6
LM13700 transconductance amp	U8
LM2903 dual comparator	U7
LM723 voltage regulator	U1
LT1013CP low drift dual op-amp	U2, U3
THAT300P matched NPN quad array	U4
TL074 quad bi-fet op-amp	U9
TL072 dual bi-fet op-amp	U5

Trimmers

100K multiturn trimmer	TUNE
10K multiturn trimmer	V/OCT
2K multiturn trimmer	HFT

1K horizontal carbon trimmer	SHP-T
1K cermet trimmer	PSU
22K horizontal carbon trimmer	SHP-S
47K horizontal carbon trimmer	SYM-S, SYM-T

Pots

50K or 47K Linear Alpha 16mm	DEPTH, WIDTH, TUNE-2, TUNE-1 on main board
Alpha pot brackets	EXP, LIN, SYNC on pot board 5 off

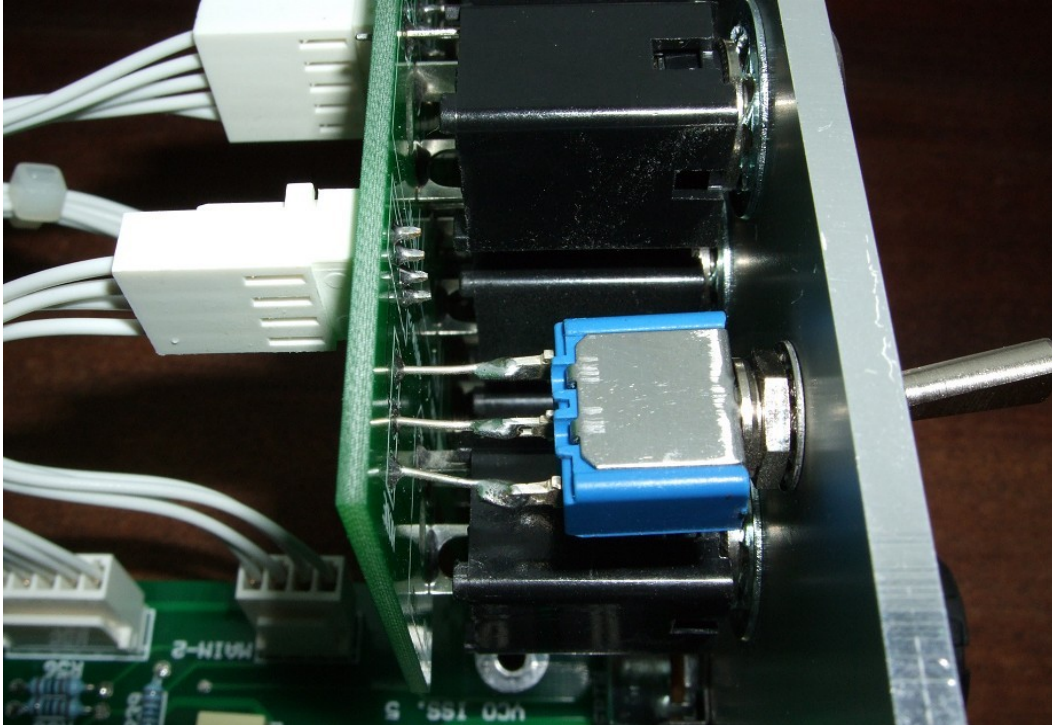
Miscellaneous

SPDT toggle switch	PWM type	1 off
3-way 0.1" header	Oakley Buss optional connector	1 off
Switchcraft 112APC	1/4" sockets mounted on socket board	9 off
4-way 0.1" MTA/Molex header	MAIN-2 (Main PCB and socket PCB)	2 off
4-way 0.1" MTA/Molex housing	MAIN-2 cable	2 off
5-way 0.1" MTA/Molex header	POTS (Pot PCB and socket PCB)	2 off
5-way 0.1" MTA/Molex housing	NSE cable	2 off
6-way 0.1" MTA/Molex header	MAIN-1 (Main PCB and socket PCB)	2 off
6-way 0.1" MTA/Molex housing	MAIN-1 cable	2 off
55mm 8-way jumper lead	LINK interconnect	1 off
MTA156 4 way header	PWR – Oakley/MOTM power supply	
MTA100 6-way header	PWR2 – Synthesizers.com power supply	
Leaded ferrite beads	L1, L2	

You may well want to use sockets for the ICs. I would recommend low profile turned pin types as these are the most reliable. You need one 16-pin DIL socket, three 14-pin DIL sockets, and five 8-pin DIL sockets.

Populating the Socket Board

The general details of this process are given in our Construction Guide however there are a few extra things that are worth mentioning. You not only have the sockets and headers to fit but you also have a switch to attach to the socket board.



This is an Apem toggle switch mounted to a 3mm Schaeffer panel. Note the spring washer and nut behind the panel. The nut at the front cannot be seen but it is the inside one that you need to use to secure the switch to the panel.

Once you have soldered your headers and sockets into place remove the socket PCB from the panel and fit your switch into the correct hole in the panel. Use the one of the nuts and the spring washer on the inside of the panel. Use the second nut on the front of the panel but don't tighten it up. Only thread it on so that all the nut is in place on the bush of the switch. Now use the inner nut to tighten the switch to the panel. This way you won't scratch the front of the panel. Use a 5/16" open ended spanner to do this but don't tighten it too much, it's only a little switch. It doesn't matter which way the switch goes in so long as the toggle moves up and down. Note you do not have to use the tagged washer that the switch normally comes with. Now solder a short length of thin uninsulated solid core wire to each of the three tangs. You can use some resistor lead clippings if you wish. Make sure the wire leads stick up at right angles from the panel surface.

Now refit the socket PCB with all of its sockets back onto the front panel. Carefully align the three wires through the three solder pads in the PCB. Now you can then flip the panel over and fit all the sockets' washers and nuts. Once this is done, you can solder the three switch leads onto the PCB. Clip off any excess lead length that sticks out above the solder.

Power supply connections

Power connections – MOTM and Oakley

The PWR power socket is 0.156” MTA 4-way header. Friction lock types are recommended. This system is compatible with MOTM systems.

<i>Power</i>	<i>Pin number</i>
+15V	1
Module GND	2
Earth/PAN	3
-15V	4

The earth/pan connection has been provided to allow the ground tags of the jack sockets to be connected to the powers supply ground without using the module’s 0V supply. Earth loops cannot occur through patch leads this way, although screening is maintained. Of course, this can only work if all your modules follow this principle.

Power connections – Synthesizers.com

The PWR2 power socket is to be fitted if you are using the module with a Synthesizers.com system. In this case you should not fit the PWR header. The PWR2 header is a six way 0.1” MTA, but with the pin that is in location 2 removed. In this way location 3 is actually pin 2 on my schematic, location 4 is actually pin 5 and so on.

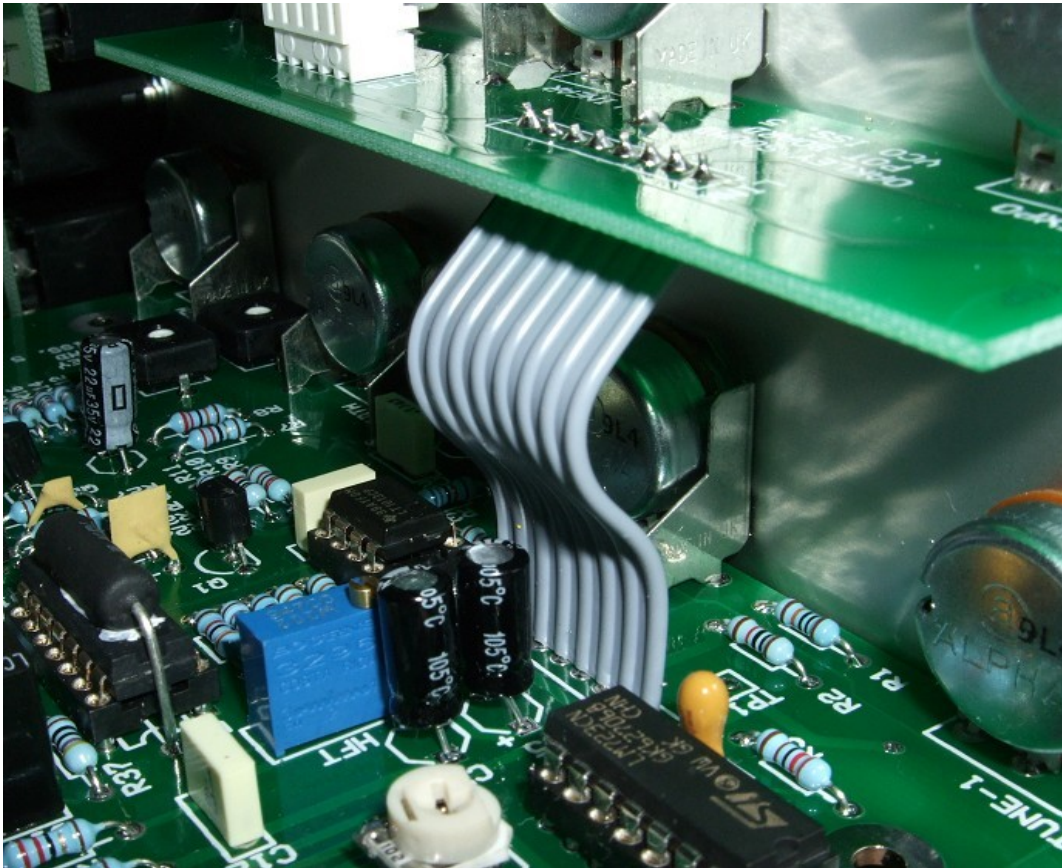
<i>Power</i>	<i>Location number</i>	<i>Schematic Pin number</i>
+15V	1	1
Missing Pin	2	
+5V	3	2
Module GND	4	3
-15V	5	4
Not connected	6	5

+5V is not used on this module, so location 3 (pin 2) is not actually connected to anything on the PCB.

If fitting the PWR2 header, you will also need to link out pins 2 and 3 of PWR. This connects the panel ground with the module ground. Simply solder a solid wire hoop made from a resistor lead clipping to join the middle two pads of PWR together.

Board to Board Interconnections

The first thing that will need doing is the interconnection between the pot and main board. This is done with a 55mm long 8-way jumper connection. Simply thread all eight wires into six holes of the LINK pads from the underside of the pot board. The other end of the jumper can then be gently coerced into the LINK pads of the main board. Solder each end of the jumper. You must solder the pot board from the top of that board, and the main board from the bottom of that board.



A close up of the 55mm long 8-way flexible interconnect between the main board and the pot board.

All the remaining interconnects will be made using either the MTA system or the slower, but cheaper, Molex system.

Make up the 4-way interconnect first. This should be made from wires 100 mm long. Make sure you get pin 1 going to pin 1 on the other housing, pin 2 to pin 2, etc. This cable will connect to the headers called MAIN-2 on each board.

The second lead is a 5-way interconnect. This is made up to be 145 mm long. This should connect the POTS headers on the socket board and the pot board.

The third lead is a 6-way interconnect. This is made up to be 90mm long. This will connect the MAIN-1 headers on the main and socket boards.

You can use some cable ties to bundle the wires in each interconnect together. This is best done once all the interconnects are in position.

Final Comments

If you have any problems with the module, an excellent source of support is the Oakley Sound Forum at Muffwiggler.com. Paul Darlow and I are on this group, as well as many other users and builders of Oakley modules.

If you can't get your project to work, then Oakley Sound Systems are able to offer a 'get you working' service. If you wish to take up this service please e-mail me, Tony Allgood, at my contact e-mail address found on the website. I can service either fully populated PCBs or whole modules. You will be charged for all postage costs, any parts used and my time at 25GBP per hour. Most faults can be found and fixed within one hour, and I normally return modules within a week. The minimum charge is 25GBP plus return postage costs.

If you have a comment about this builder's guide, or have found a mistake in it, then please do let me know. But please do not contact me or Paul Darlow directly with questions about sourcing components or general fault finding. Honestly, we would love to help but we do not have the time to help everyone individually by e-mail.

Last but not least, can I say a big thank you to all of you who helped and inspired me. Thanks especially to all those nice people on the Synth-diy and Analogue Heaven mailing lists and those at Muffwiggler.com.

Tony Allgood at Oakley Sound

Cumbria, UK

© September 2010

No part of this document may be copied by whatever means without my permission.